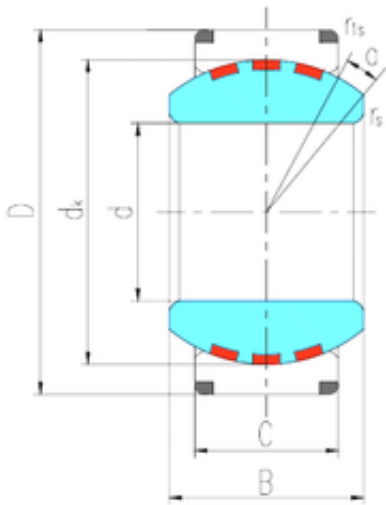




Ruville BEARING COMPANY



200 mm x 290 mm x 130 mm LS GE200XF/Q
plain bearings

Bearing No. GE200XF/Q

Size	200x290x130 mm
Bore Diameter	200 mm
Outer Diameter	290 mm
Width	130 mm
d	200 mm
D	290 mm
B	130 mm
C	100 mm
dk	250 mm
r min.	1,1 mm
r1 min.	1,1 mm
Angle	7 °
Weight	27,3 Kg
Basic dynamic load rating (C)	2500 kN

GE200XF/Q Bearing 2D drawings and 3D CAD models