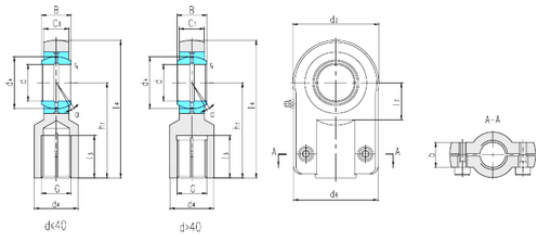




# Ruville BEARING COMPANY



## LS SIQ40ES plain bearings

Bearing No. SIQ40ES

Bore Diameter	40 mm
d	40 mm
B	28 mm
b	23 mm
d2	100 mm
d4	45 mm
d6	90 mm
dk	53 mm
h1	105 mm
l3 min.	37 mm
l4 max.	155 mm
l7 min.	45 mm
r min.	0,6 mm
C1	23 mm
Thread (G)	M27 × 2
Bolt (G)	M10 × 25
Angle	7 °
Weight	2,16 Kg
Basic dynamic load rating (C)	99 kN

SIQ40ES Bearing 2D drawings and 3D CAD models